

# 1 Connect the Modem to a Computer

**Step 1** Get the **DSL Modem** from your DSL Quick Start Kit and take it out of the bag.

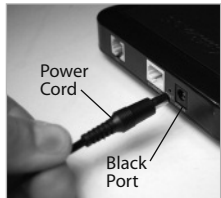


**Step 2** Get the **Power Cord** from your DSL Quick Start Kit.

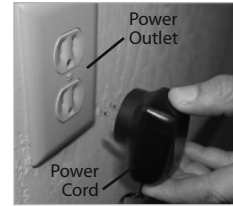


**Note:** Your Power Cord may look different.

**Step 3** Plug the smaller end of the **Power Cord** into the **Black Port** on the back of the Modem.



**Step 4** Plug the larger end of the **Power Cord** into a **Power Outlet**.



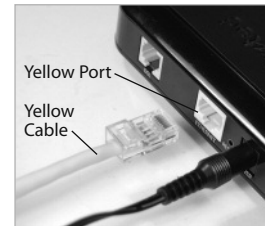
**Step 5** Make sure the **Power Light** on the Modem is **SOLID Green**.



**Note:** The DSL light may blink.

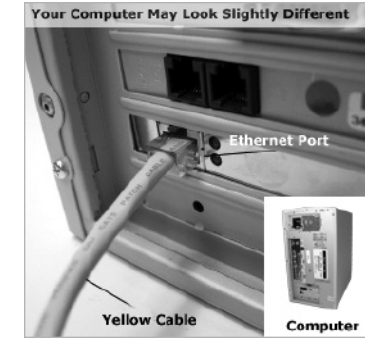
**Step 6** Get the **Yellow Cable**.

**Step 7** Plug one end of the **Yellow Cable** into the **Yellow Port** on the back of the DSL Modem.



**Step 8** Make sure that your computer is turned on. Then, plug the other end of the **Yellow Cable** into the **Ethernet Port** on the back of the computer.

An **Ethernet Port** looks similar to a regular Phone Jack, but is slightly larger.



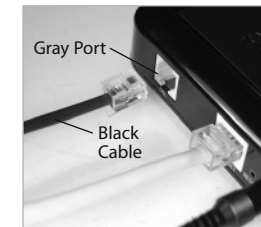
**Step 9** Make sure that the **Ethernet light** on the Modem is **Green**. This may take a few moments.



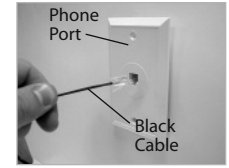
**Note:** If the Ethernet Light does **NOT** turn green, make sure the Yellow Cable is properly connected on both ends.

**Step 10** Get the **Black or Gray DSL Cable** from your DSL Quick Start Kit.

**Step 11** Plug one end of the **DSL Cable** into the **Gray Port** located on the back of the Modem.



**Step 12** Plug the other end of the **DSL Cable** into the **Phone Jack** closest to your computer.



**Step 13** Make sure **All Devices** with the same phone number as your DSL Line have Phone Filters. This includes telephones, fax machines, caller ID boxes, satellite TV receivers, TiVo devices, and answering machines.



**Step 14** Make sure that the **Power** and **DSL Lights** are solid **Green**. This may take up to 30 seconds.



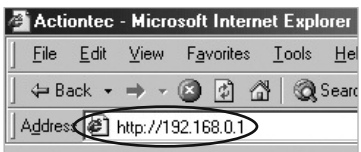
**Note:** If the DSL Light continues to blink, make sure you received notification from your DSL Internet Service Provider that your DSL service has been activated.

Flip this Quick Start Guide over to continue

NEXT

## 2 Configure the Modem

**Step 1** Open a Web browser (Netscape Navigator or Internet Explorer, for example). In the address bar, enter **http://192.168.0.1** then press **Enter** on the keyboard.



**Note:** When you open your web browser you may get a page cannot be displayed error. This is normal and will not effect the instructions in step 1.

**Step 2** The "Main Menu" screen appears. Select **Auto Configure Your Gateway**.



**Note:** If this screen does not appear, make sure your Ethernet port is configured for Dynamic IP.

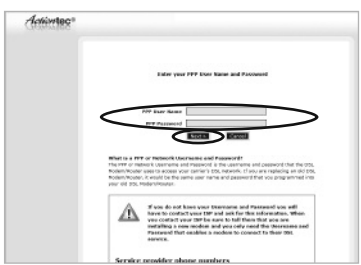
**Step 3** The "Welcome" screen appears. Click **Next**.



**Step 4** The Modem is now detecting your Internet provider's settings. This process can take up to 3 minutes.

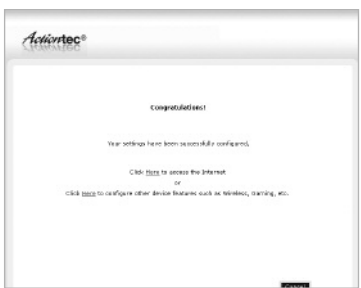


**Step 5** In the next window, enter the **User Name and Password** provided by the ISP. Click **Next**.



**Hint:** Your Username may be your main e-mail address.

**Step 6** The "Congratulations" screen appears. The Power Light flashes rapidly while the Modem restarts, then glows **SOLID Green** when fully operational. The DSL Light will glow **SOLID Green** and the Internet Light will flicker **Green** indicating Internet activity.



If you have any problems connecting or configuring this device please contact our Tech Support at **1-888-436-0657**

**Congratulations!**  
You have successfully installed your DSL Modem.  
You can now access the Internet.



**DSL Modem**  
Model# GT701D

# Quick Start Guide

**Note: Compatible with Macintosh, Linux and Windows.**  
This Quick Start Guide will walk you through the easy steps to set up your DSL Modem. During this process, we'll show you how to:

- 1 Connect the Modem to a Computer**
- 2 Configure the Modem**

You will need the following items from your Actiontec Quick Start Kit:

- DSL Modem
- Black or Gray DSL Cable
- Black Power Cord
- Yellow Cable

You will also need to know your DSL Username and Password provided by your Internet Service Provider.

